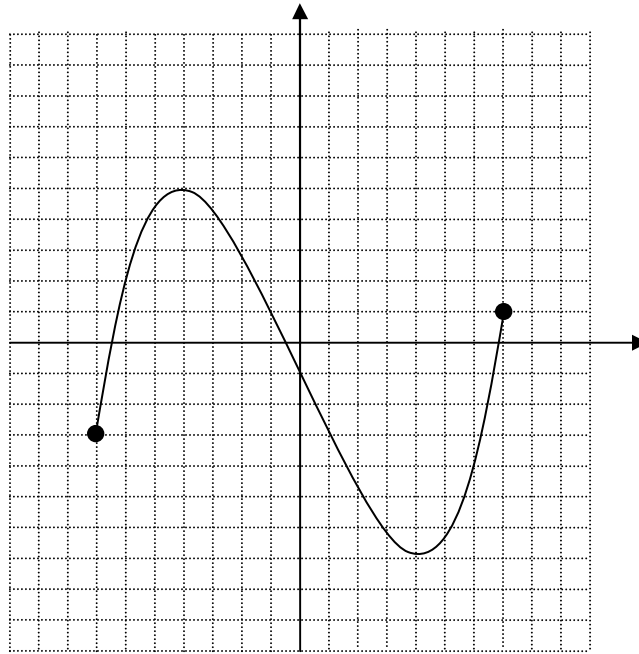




Print Name: \_\_\_\_\_

**MathB1A / Fall 2011**  
**Quiz:Function Information Part II (3.2)**

Use the above graph to answer the following questions:



- 1) Find  $f(1)$
- 2) Find all  $x$  such that  $f(x) = 3$
- 3) What are the turning points?
- 4) What are the open intervals where  $f(x)$  is increasing?
- 5) What are the open intervals where  $f(x)$  is decreasing?
- 6) What is the maximum value?
- 7) What is the minimum value?